



Slum and Rural
Health Initiative

ANNUAL REPORT

20

22

www.srhin.org



Photo Description:

Community members in the Internally Displaced Persons Camps in Northern Nigeria are singing, drumming and dancing in a circle with SRHIN members during the launch of the Friendship Tent - the world's first solar-powered mental health center in underserved settings.

MESSAGE *from* OUR FOUNDER



Dr Isaac Olufadewa
Founder, Slum and
Rural Health Initiative.



To build on our progress in the last five years and achieve SRHIN's ambitious Strategic Action Plan 2022 – 2026, we must keep co-creating transformative solutions with the communities we serve, challenging the status quo, implementing transformative initiatives, leveraging digital or innovative platforms, connecting with and expanding our partnership base.

It has been an incredible year of learning and impactful progress for us at Slum and Rural Health Initiative. We have continued to save lives, improve livelihoods and transform communities by meaningfully engaging local community members, stakeholders and the people we serve as part of the solution and not as “passive beneficiaries”.

From our Brave Heart project that promoted mental health to thousands of people living in internally displaced persons (IDP) or migrant camps in Northern Nigeria to our SIMBIHealth sexual and reproductive health and rights project that reached hundreds of thousands of young people, I am so proud of our achievements in 2022.

More importantly, in 2022, our projects reached the most diverse groups of people living in marginalized settings. For instance, our The HANDS Project reached people with disabilities, our Communities Against Sexual Violence (CASV) project empowered teenage girls and women in IDP camps in Northern Nigeria, our STREEM project reached street children and our Youth for COVAX project targeted marginalized youths.

We had countless opportunities to implement innovative solutions as well as build the evidence base. We had the privilege to share our work with both local leaders in communities and global leaders at international events such as the Grand Challenges Annual Meeting at Brussels, Belgium and the One Young World Summit in Manchester, United Kingdom.

Building strong relationships with communities, partners, and funders to advance health equity and social justice allows us to be curious, creative and collaborative as we constantly improve on our transformative solutions.

As an agile, resourceful and learning organization, we have made more impact, even with less, because of our hardworking and excellent people – staff, interns and volunteers. I appreciate you all.

It has been a humbling and incredibly fulfilling journey so far.

Thank you to all our people, partners and funders who have made all our achievements possible!



Contents

Message from our Father	2
Contents	3
About Slum & Rural Health	4
SRHIN in Numbers	5
How we work	6
Our Footprint	7
Our Projects	8 – 9
Our Projects	10 – 11
Picture splash	12 – 14
Achievements	15
SRHIN Health Equity Champion Spotlight	16
Featured publications	17
Testimonials	18
Our Funders	19
Leadership Team	20 – 21
SHEC	22

ABOUT SLUM AND RURAL HEALTH INITIATIVE

Our Vision

We envision an Africa where healthcare information and services is easily available to everyone, everywhere.



UNDERSERVED COMMUNITIES

Africa bears 25% of the global burden of diseases, yet has only close to 3% of the world's doctors.

UNDERINFORMED POPULACE

There are several barriers that limit access to healthcare in Africa which include social, cultural, religious barriers among others

Our Why?

UNDERUTILIZED TECHNOLOGIES

There is a current underutilization of technology which has the immense power to positively improve access to healthcare.



Our Mission

To improve access to health information and services by connecting health professionals to the populace through advocacy, technology and research so that they can make the right health decisions.

SRHIN In Numbers



8

African
Countries



1.2M

Community
Members &
People reached



2,400

Volunteers from
all around the
world.



33+

Conferences and
Scholarships won
by members



20K

Hours of
committed
service



155+

International
Peer-Reviewed
Publications



274+

Outreaches
and events
organized



407

Online, print,
radio and
TV appearances



3.6M +

Combined
social media
impressions

How We Work



We are locally grounded through the work of our active 24 state coordinators who manage the volunteer community and supervise our innovative projects

Our Board of Trustees provide strategic direction to the Executive Team who implement our innovative and impactful project across the country.

The team is further supported by a Global Advisory Board whose insights, ideas and network benefit our organization and the marginalized communities we serve



Dr. Isaac Olufadewa

Executive Director,
Slum and Rural Health Initiative
Medical Doctor & African Union Scholar
Mandela Washington & Women Deliver Fellow
Member, LANCET COVID-19 Commission

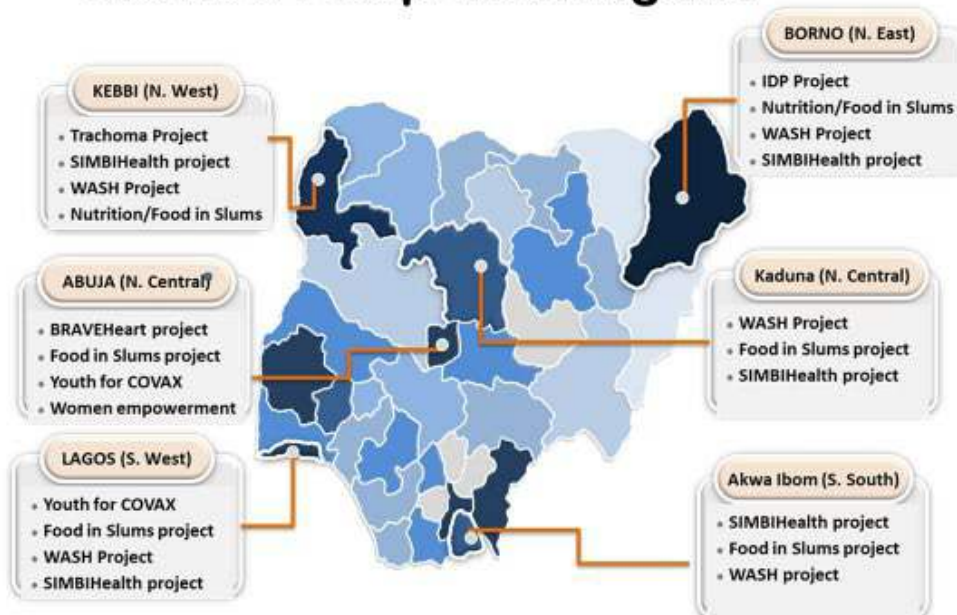


Miracle Adesina

Country Coordinator (Nigeria),
Slum and Rural Health Initiative
Researcher with over 70 publications
Member, WHO-HIFA Essential
Health Services and COVID-19 Taskforce

Our Foot Print

SRHIN's Footprint in Nigeria



**FRIENDSHIP
TENT**

"Friendship Tent" is a solar powered mental health centre that serves thousands of migrants in New Kucingoro/Durumi IDP camp. The project is supported by a close to \$200,000 (USD) transformative investment from Grand Challenges Canada

Project Sponsors:



Grand Challenges Canada
Grands Défis Canada

NIHR

National Institute
for Health Research



Global Affairs
Canada

PROJECT SPOTLIGHT

YOUTH4COVAX

“We believe youths can be game changers in promoting COVID-19 and other routine vaccinations in remote and rural communities in Nigeria, Ethiopia and Africa.”



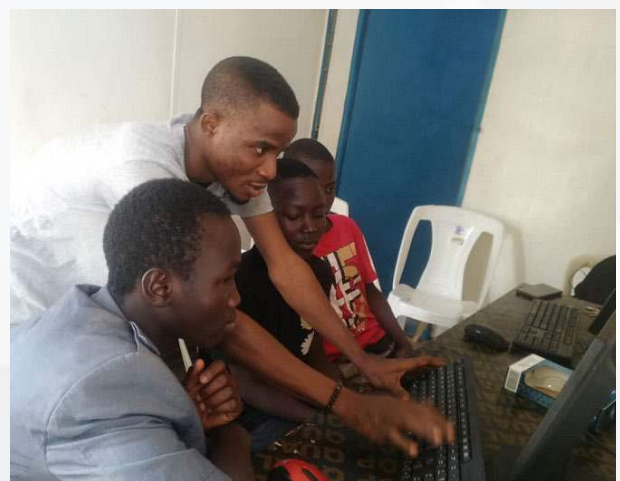
COMMUNITIES AGAINST SEXUAL VIOLENCE (CASV)

We are dismantling toxic patriarchal beliefs and harmful cultural norms by engaging and educating community members, as well as using a gender transformative approach by providing women knowledge skills and financial power.



ENTREPRENURESHIP AND SKILLS PROJECT

We are empowering young people living in underserved settings with 21st century digital and vocational skills providing with them the opportunity to change their lives and transform their communities.



Our Projects



Brave Heart

Preventing mental illness, reducing severity of mental health symptoms and developing policies to reduce the mental health burden among vulnerable young people



Youth 4 COVAX

Increasing vaccine uptake and decreasing vaccine hesitancy among young people



SRHIN Research Academy

Empowering early career researchers across over 12 countries



SIMBIHealth

Africa's flagship artificial intelligence-driven innovation that delivers comprehensive sexual, mental and social health education in multiple languages





Impact Analysis Project

Monitoring, measuring and make sense of your social, health and development using world standard validated tools, approach and model



Food in Slums

A comprehensive nutrition strategy to reduce the burden of malnutrition



Trachoma Project

Using One health approach and the SAFE strategy to combat neglected tropical diseases



Infographics Project

Simplifying, summarizing and sharing reliable health information in an easy-to-understand format (visual texts and videos)



Picture Splash





SRHIN distributes hygiene pack to over 100 people in CAN IDP Camp, Borno



Hygiene messages translated to over 100 local languages by SRHIN



SRHIN partners Reckitt to deliver hygiene packs and messages to over 200 schools in Lagos

SRHIN Launches novel friendship tent and distributes relief packages to 500 residents at New Kuchingoro IDP camp, Abuja Northern Nigeria

By Amanda Graham - 3 October 2021



Hygiene packs distributed to 500 residents of New Kuchingoro IDP Camp, Abuja

FP2030
@FP2030Global

The **#COVID19** pandemic is rapidly changing and quickly spreading. We are working to capture as much information and resources here: bit.ly/2JDDxWW

STAY AT HOME
To Avoid spread of the virus

AVOID TOUCHING
your eyes, nose, face and mouth.

AVOID CROWDED AREAS
Stay at least 1.5 metres away from people.

SHIN Hygiene messages publicized by FP2030



Children in IDP camps educated on proper handwashing practice

SRHIN holds cholera prevention campaign in Kaduna

by **Chima** — October 13, 2021



SRHIN distributes hygiene packs to over 70 people in Ungwan Machibi, Kaduna State



Over 100 disabled and vulnerable children empowered with soapmaking skills

For his work at SRHIN, our founder, **Dr Isaac Olufadewa** won the Royal African Leadership Award, established by His Imperial Majesty, The Ooni of Ife. He also presented our research work at and attended the Grand Challenges Annual Meeting (GCAM) in Brussels, Belgium, 2022

Our Admin Officer, **Ruth Oladele** was invited to join the Women in Global Health community. She also plays a crucial role in Pandemic Periods – a global movement to combat period poverty

Our Country Coordinator (Nigeria), **Miracle Adesina**, presented at and attended the One Young World Summit in Manchester, United Kingdom in September, 2022.

Our partnership officer, **Dr Toluwase Olufadewa** won the Royal Society of Tropical Medicine and Hygiene Grant and is an International Trachoma Institute (ITI) fellow. She was also invited to join the Women in Global Health Community.

SRHIN HEALTH EQUITY CHAMPION SPOTLIGHT



Abdulmumin Ibrahim SRHIN Health Equity Champion Kwara State

Abdulmumin is a pharmacist who completed his undergraduate education at the University of Ilorin, Kwara State. He has published over 10 peer reviewed publications and he received a full scholarship to attend the International AIDS Society (IAS) Conference in Montreal, Canada, in 2022.

What do you think are the roles young people can play in advancing global health and reducing health inequities?

Young people can and are playing their part in advancing global health and reducing health inequities through diverse ways encompassing Advocacy, Volunteering, Outreach, Innovation, Technology and Research. As a young person, you can join youth-led organizations, NGOs, engage in health promotion campaigns, participate in policy discussions, and so many more.

How has SRHIN and the State Health Equity programme provided you this opportunity to advance health equity and how have you personally benefitted from SRHIN/the experience of promoting health equity?

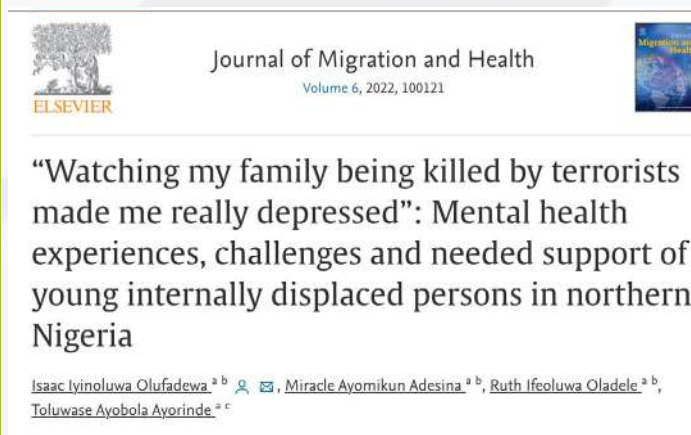
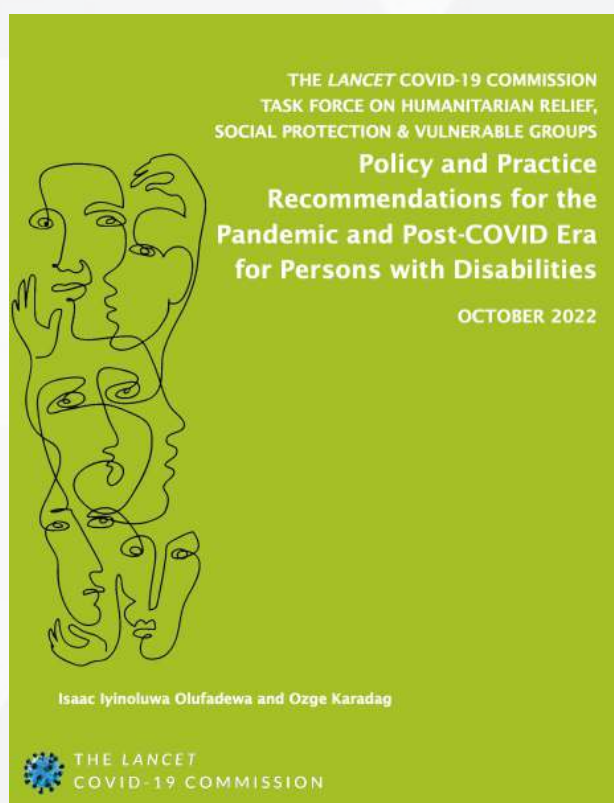
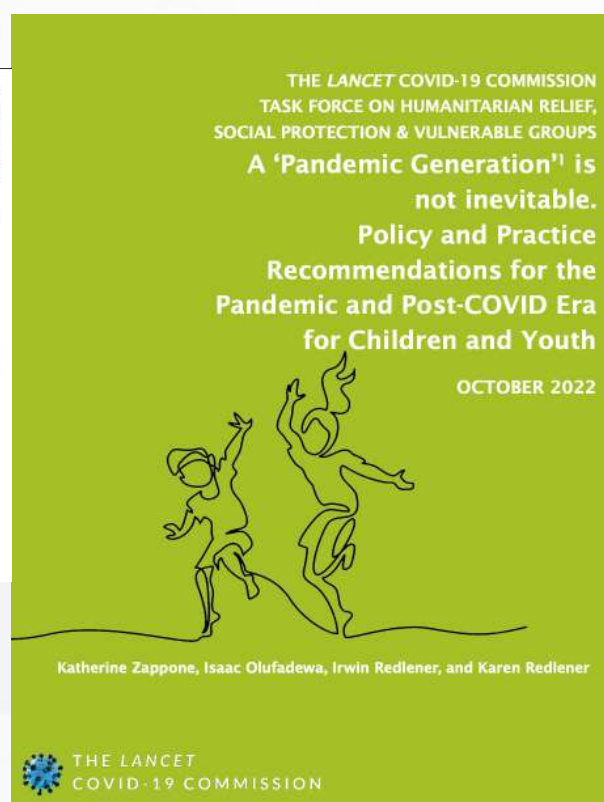
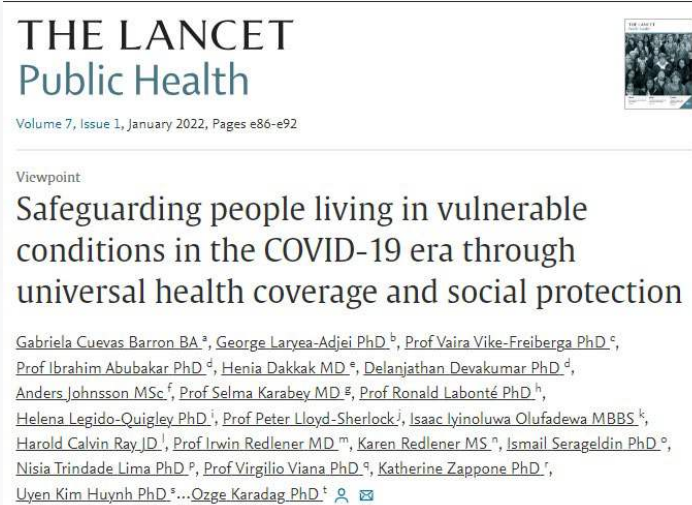
I was provided a platform that empowered me to make a tangible difference in my community. I engaged in outreach initiatives and community interventions, delivering impactful advocacy and health promotion campaigns to underserved and underinformed populations within my locality. Leveraging virtual campaigns extensively, I broadened the scope of our advocacy efforts. Serving as a SHEC, I acquired invaluable hands-on skills, knowledge, connections, and experience that have significantly propelled my career growth and professional development journey.

What will be your message to world leaders (and the Executive Director of WHO) in an accelerating work on global health?

Esteemed World Leaders and the Executive Director of WHO, accelerating work on global health requires an all-hands approach of which young people are an essential part of the wheel. Young people have shown to be capable leaders and action-oriented. I implore you to empower young people across the world in tackling equitable access to healthcare, health education and awareness, research and innovation and other focus areas in accelerating global health.

FEATURED PUBLICATIONS

People of SRHIN contributed to global policies and publications in several journals including the Lancet Public Health and the Lancet COVID-19 commission. ***“We believe in leveraging evidence-based strategies and also contributing to the evidence base. Our team at SRHIN published several papers in international journals and contributed to local, national and global policies.”***





Testimonials

"I'm really happy to be a beneficiary of this program. I have learnt to operate computers. Thank you so much and God bless the initiators of this program."

- Ms. Ali (Adamawa State) Beneficiary, Communities Against Sexual Violence Project

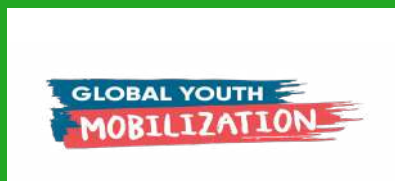
"There are many people in this IDP camp who have one mental health condition or the other, We are grateful to the Slum and Rural Health Initiative team that raised awareness on mental health, constructed a solar-powered Friendship Tent in the IDP community to recognize and treat young people with mental illness"

- Mr Solomon, IDP Camp Community Leader, Northern Nigeria

"As a State Health Equity Champion, I have improved my leadership capabilities, organizational skills, project management and my interpersonal skills. It has given me the chance and perfect platform to do what I have always wanted to do, which is to help people and further reduce the health inequity in my community"

- Pharm. Ibrahim Abdulmumin Damilola
SRHIN Kwara State Health Equity Champion

Our Funders



You can reach out to us via:

hello@srhin.org
community@srhin.org
partnership@srhin.org

Isaac: +2348132021189

Miracle: +2347040850783

Leadership Team



Dr Isaac Olufadewa
Founder/Executive Director



Ruth Oladele
Administrative Officer



Miracle Adesina
**Country Coordinator
(Nigeria)**



Abimbola Solagbade
Research & Grants Officer



Dr Toluwase Olufadewa
Partnership Officer



Dr Moyinoluwa Oladoye
Programs Officer



Edith Isiek
Grants Officer



Joshua Ibiyinka
Branding & Media Officer



Jumoke Ogundele
**Research and Programs
Officer**

Leadership Team



Bearice Oyasope
Assistant Programs Officer



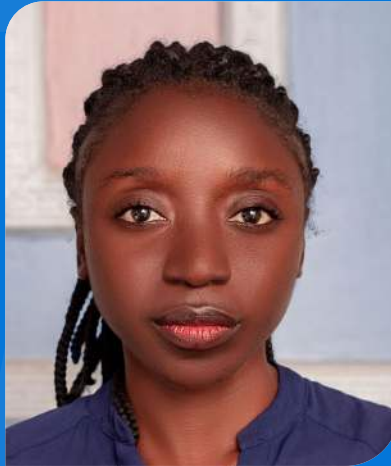
Ararso Baru
**Country Coordinator
(Ethiopia)**



Mohamed Manyeh Marah
**Country Coordinator
(Sierra Leone)**



Owen Adeniyi
Digital Manager



Allagh Sewuese Anenge
Program Assistant



Yahaya Dauda
Programs and Policy Officer



Adeoluwa Idowu
IT Officer and Consultant



Joseph Jatta
**Country Coordinator (The
Gambia)**



SRHIN HEALTH EQUITY CHAMPIONS

STATE

COORDINATOR

Abia	Hebron Nwaihie
Adamawa	Andrew ShalldaMoses
Akwa Ibom	Mba Victor Okorie
Anambra	Tochukwu Precious
Bauchi	Husseini Muhammed
Benue	Regina Ikor
Borno	Emmanuel Musa
Cross River	Nnenne Eke
Ebonyi	Chidera Nweze
Ekiti	Ojo Iyanuoluwa
Enugu	Kenneth Egwu
Imo	Franklyn Opara
Kano	Aanuoluwa Olusegun
Kebbi	Akeem Opeyemi
Kwara	Ibrahim Abdulmumin Damilola
Lagos	Ruth Ojo
Niger	Abubakar Kabir Dantala
Ogun	Itunu Kolapo
Ondo	Richard David
Osun	Oluyedun Abdmateen Temitope
Oyo	Kazeem Omolara
Rivers	Assurance Ohonsi
Abuja	Allagh Sewuese Anenge

*The best way to find
yourself, is in service to
others.*

- Mahatma Gandhi

Thank You

Srhinafrica



www.srhin.org



**Slum and Rural
Health Initiative**